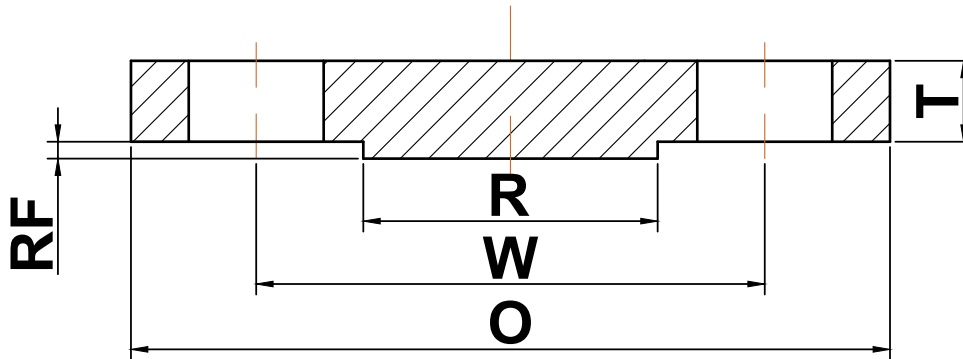


➔ ASME B16.47 series A flange

▶ Class 300 Blind Flanges



Nominal Pipe Size	Outside Diameter (O)	Bolt Circle (W)	Raised Face Diameter (R)	Number of Holes	Diameter of Holes	Thickness (T)	Approximate Weight (lbs)
26	38.25	34.50	29.50	28	1.75	3.31	1079
28	40.75	37.00	31.50	28	1.75	3.56	1315
30	43.00	39.25	33.75	28	1.88	3.75	1545
32	45.25	41.50	36.00	28	2.00	3.94	1795
34	47.50	43.50	38.00	28	2.00	4.12	2068
36	50.00	46.00	40.25	32	2.12	4.38	2435
38	46.00	43.00	40.50	32	1.62	4.25	2001
40	48.75	45.50	42.75	32	1.75	4.50	2380
42	50.75	47.50	44.75	32	1.75	4.69	2689
44	53.25	49.75	47.00	32	1.88	4.88	3079
46	55.75	52.00	49.00	28	2.00	5.06	3500
48	57.75	54.00	51.25	32	2.00	5.25	3896
50	60.25	56.25	53.50	32	2.12	5.50	4442
52	62.25	58.25	55.50	32	2.12	5.69	4906
54	65.25	61.00	57.75	28	2.38	6.00	5684
56	67.25	63.00	59.75	28	2.38	6.06	6099
58	69.25	65.00	62.00	32	2.38	6.25	6669
60	71.25	67.00	64.00	32	2.38	6.44	7274

(a) All dimensions are in inches

(b) These flanges will be furnished with a 1/16" raised face unless otherwise specified.