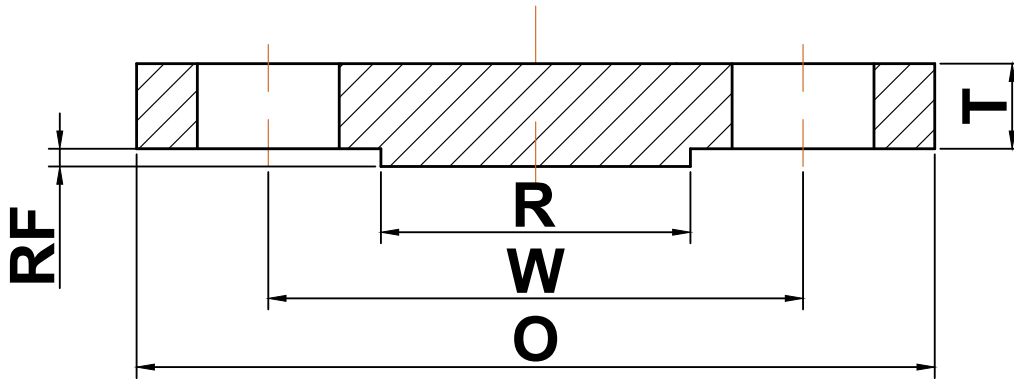




## ANSI b16.5

### ▶ Class 2500 Blind Flanges



Nominal Pipe Size	Outside Diameter (O)	Bolt Circle (W)	Raised Face Diameter (R)	Number of Holes	Diameter of Holes	Thickness (T)	Approximate Weight (lbs)
1/2	5.25	3.50	1.38	4	0.88	1.19	7
3/4	5.50	3.75	1.69	4	0.88	1.25	8
1	6.25	4.25	2.00	4	1.00	1.38	11
1 1/4	7.25	5.12	2.50	4	1.13	1.50	17
1 1/2	8.00	5.75	2.88	4	1.25	1.75	23
2	9.25	6.75	3.62	8	1.13	2.00	39
2 1/2	10.50	7.75	4.12	8	1.25	2.25	56
3	12.00	9.00	5.00	8	1.38	2.62	86
4	14.00	10.75	6.19	8	1.63	3.00	135
5	16.50	12.75	7.31	8	1.88	3.62	225
6	19.00	14.50	8.50	8	2.13	4.25	345
8	21.75	17.25	10.62	12	2.13	5.00	530
10	26.50	21.25	12.75	12	2.63	6.50	1025
12	30.00	24.38	15.00	12	2.88	7.25	1300

(a) All dimensions are in inches

(b) These flanges will be furnished with a 1/4" raised face unless otherwise specified.